



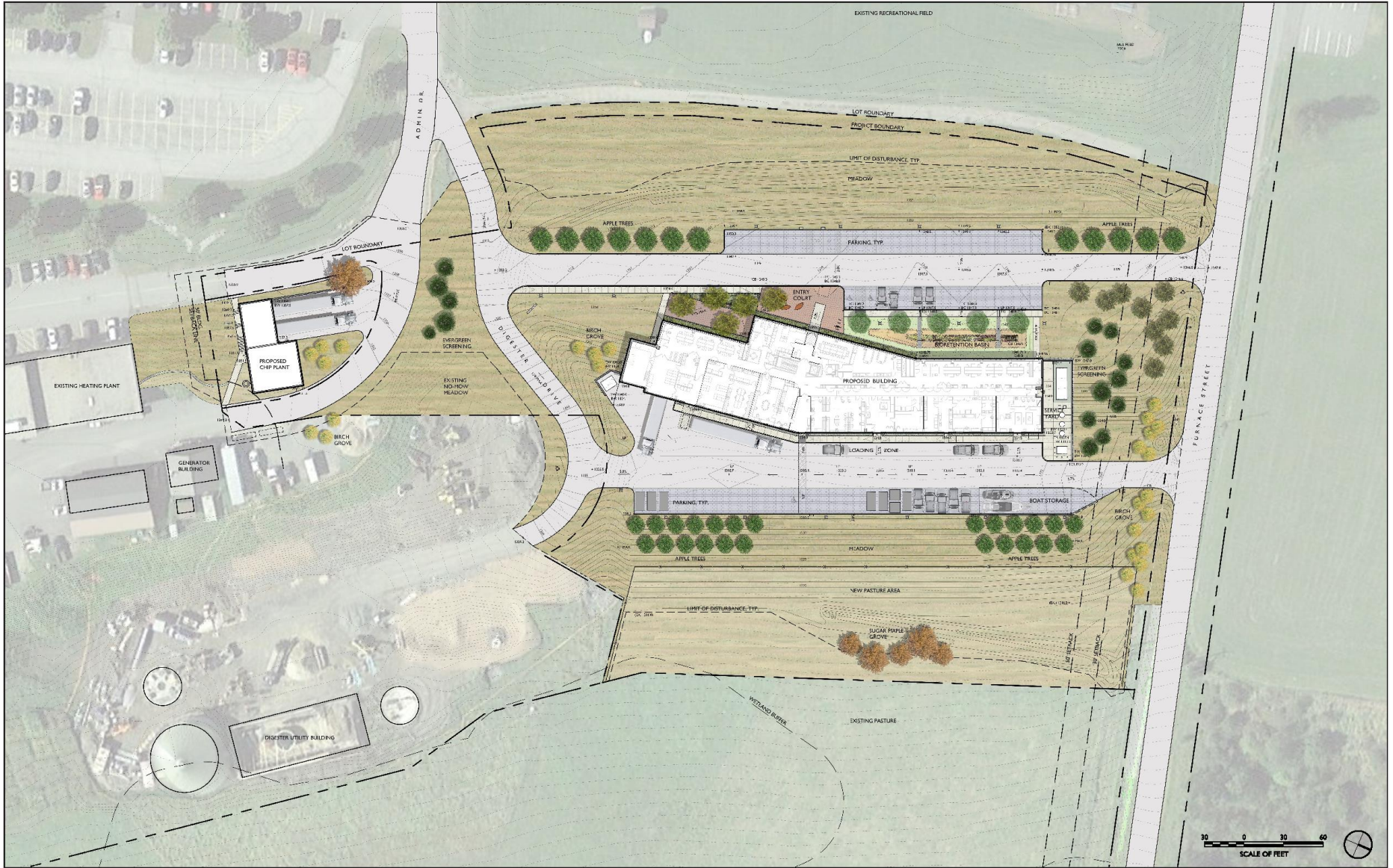
VERMONT AGRICULTURE & ENVIRONMENTAL LABORATORY

LEGISLATIVE
PRESENTATION
2019 LEGISLATIVE SESSION





Site Location: North edge of VTC's campus





VERMONT
AGRICULTURAL AND
ENVIRONMENTAL
LABORATORY
163 ADAMS DRIVE
RANDOLPH CENTER, VERMONT 05061

CANNONDESIGN

vhb
WAGNER HODGSON
LANDSCAPE ARCHITECTURE

- CANNONDESIGN
Architectural Firm #00107
60 Summer Street, Suite 500
Boston, MA 02110
- STATE OF VERMONT DEPARTMENT OF
BUILDINGS & GENERAL SERVICES
Chief
2 Dummer Street
Montpelier, VT 05633-3001
- VERMONT STATE COLLEGE
Landscape
675 Colgate
Randolph Center, VT 05061
- FREEMAN FRENCH FREEMAN
Architectural Associates
15 Main Street
Burlington, VT 05401
- KNIGHT CONSULTING ENGINEERS
Geotechnical Engineer
11 Knoll Drive
Wilton, VT 05495
- HYNE ENGINEERS
1000 Colchester Rd., 303
Rochester, MA 02001
- WAGNER HODGSON
Landscape Architect
Burlington, VT 05401
- YANASE LAMSON BRISTLIN
1001 N. State
North Ferrisburgh, VT 05473
- KRESS & LAMOND ENGINEERS
1000 State
Colchester, VT 05446
- VERMONT LENS CONSULTING
475 Acorn Street, 2nd Floor
Boston, MA 02115

ACT 250 PERMITTING SET
JULY 06, 2016

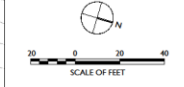
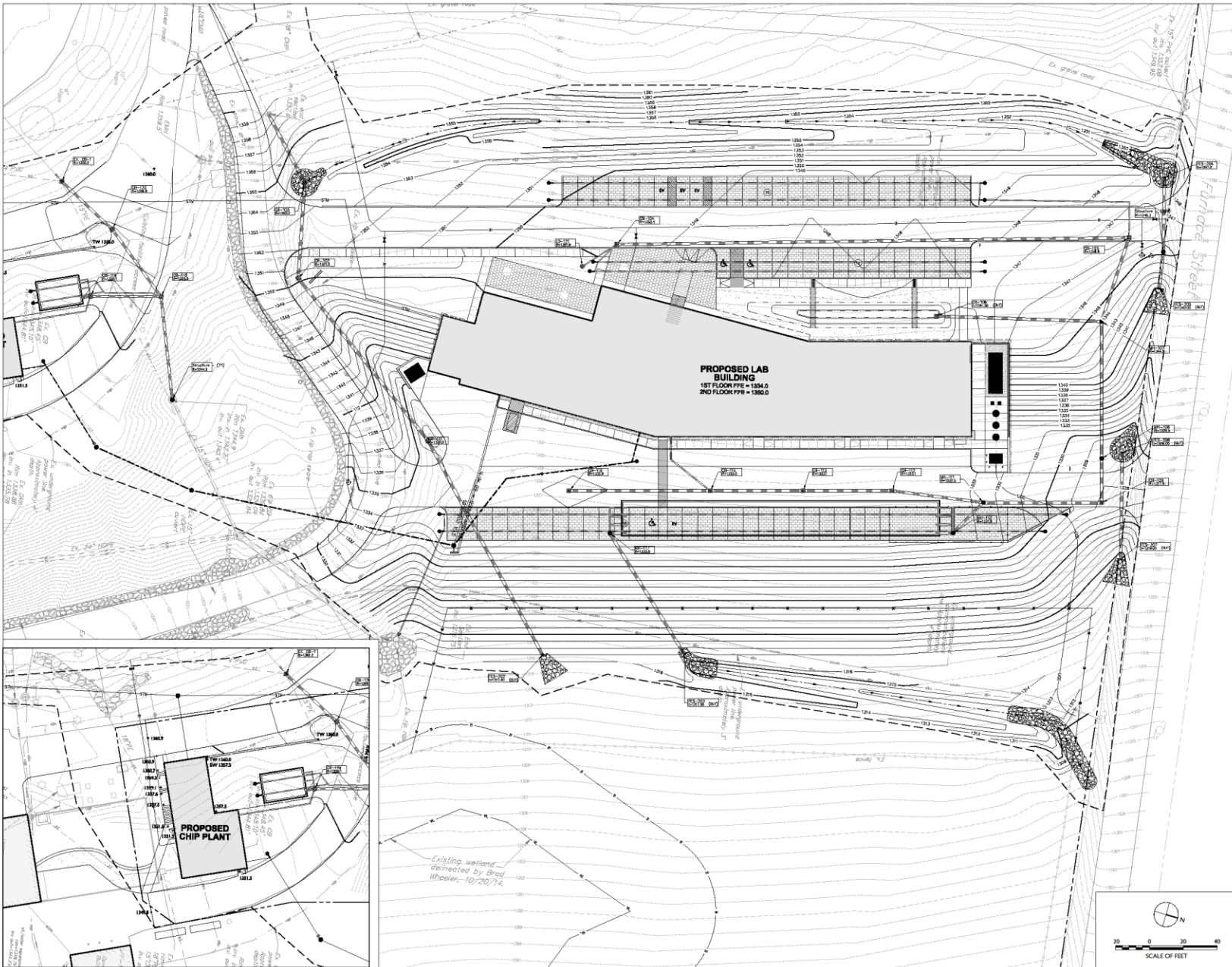
3	Design Development	22 APRIL 2016
2	SIS, Design Development	08 MARCH 2016
1	Schematic Design	20 MAY 2015
No.	Revision	Date



GRADING AND DRAINAGE PLAN

Scale: Issue Date: 07/06/2016
Project No.: 09814-03 Checked by:

C0201



© Cannon Design 2015
 All rights reserved.
 44202016 13161 PM

DESIGN DEVELOPMENT
PROGRESS SET
MARCH 08, 2016

3	Design Development	28 APRIL 2016
2	50% Design Development	08 MARCH 2016
1	Schematic Design	28 MAY 2015
No.	Description	Date

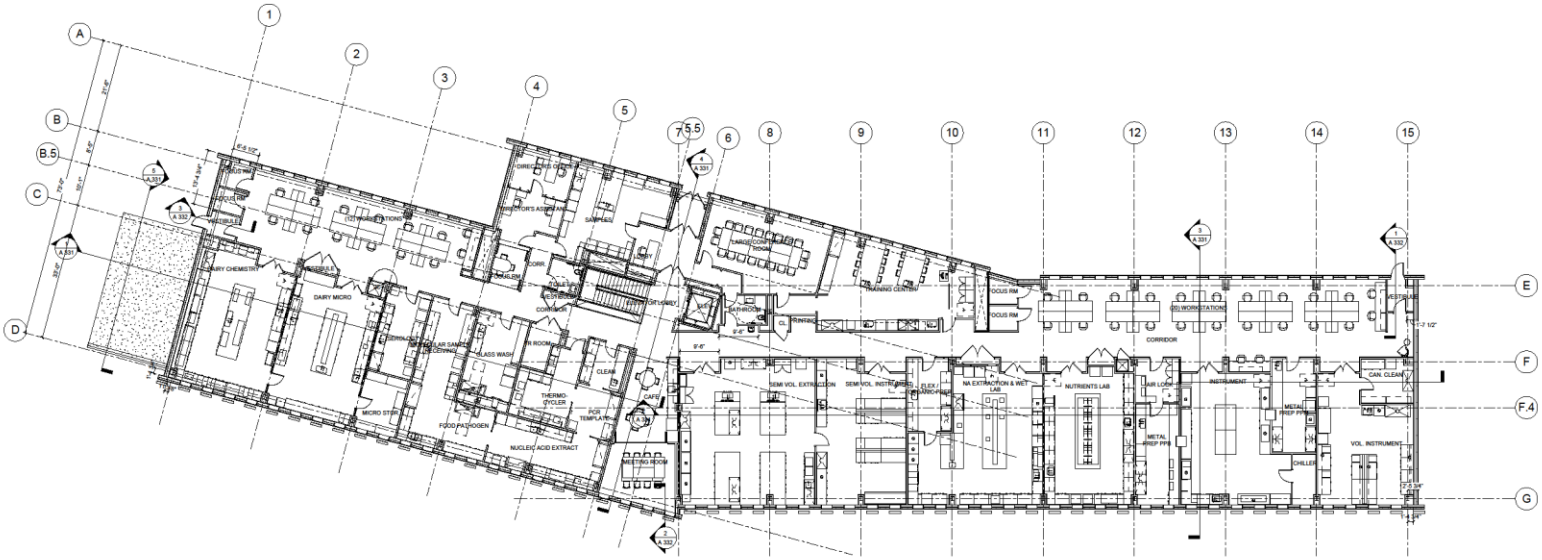


Drawing Title

LEVEL 02 FLOOR PLAN

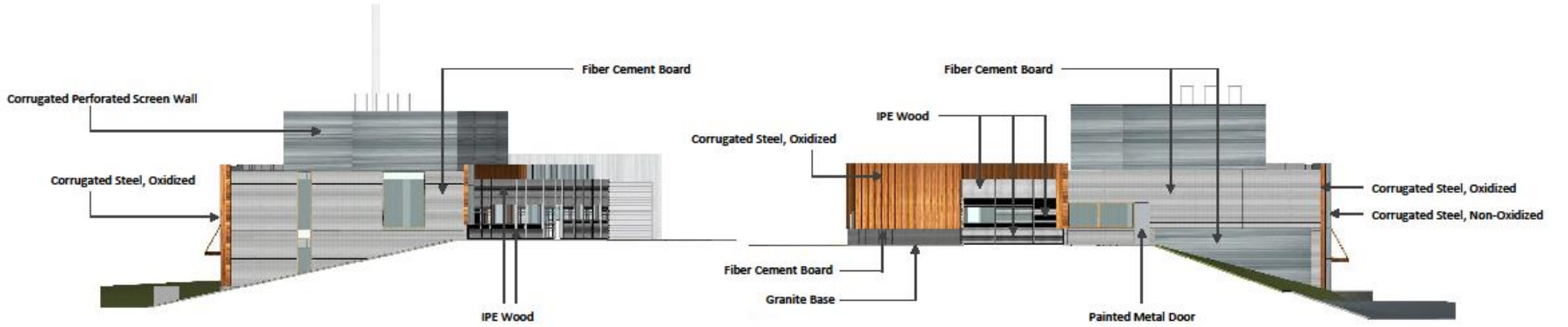
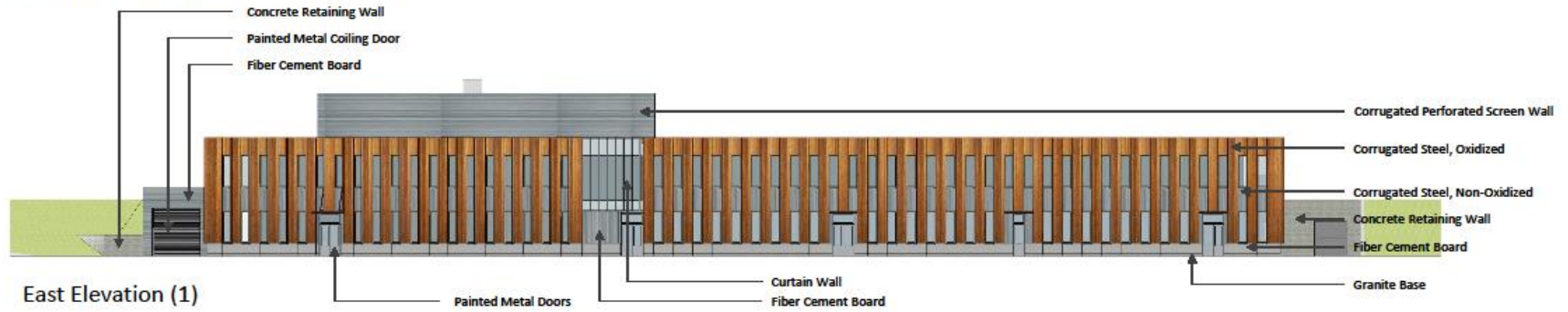
Scale: AS NOTED Issue Date: 05/26/2016
Project No.: 09614-02 Checked By: RB

A 101



1 SECOND FLOOR PLAN
3/8/16 - 11'6"

Building Elevations – Attachment No. VAEL SI 5.1



Where we are now:

- Permits
- Construction
- Occupancy



From Entry Looking North 10



Lower Level Looking North 11



View of Office/Entry



View of Open Office South 13



